



Smoke Outlook

Southern Sequoia Lightning Fires

7/19 - 7/20

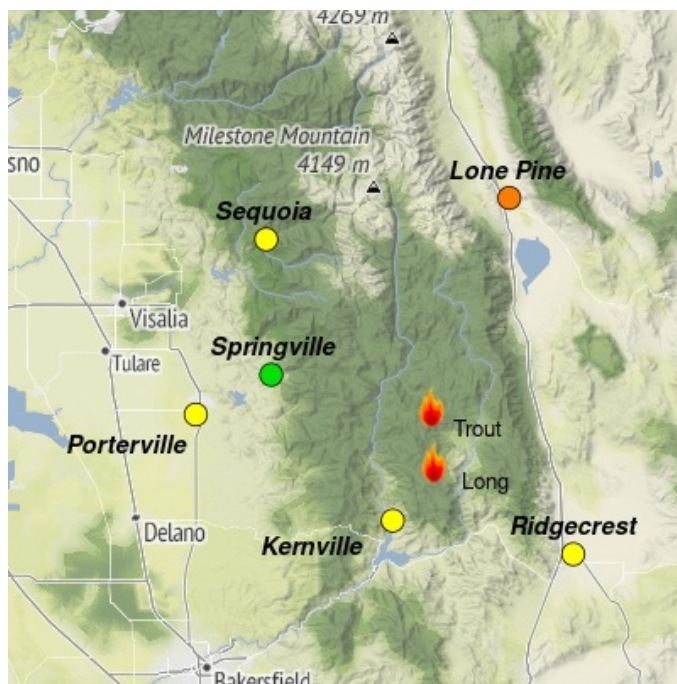
Issued by [Wildland Fire Air Quality Response Program](#) on July 19, 2024 at 07:54 AM PDT

Fire

Both Fires were very active yesterday with the Trout Fire being the largest smoke producer of the two. Large fire growth is possible as the atmosphere becomes increasingly unstable. The Trout Fire is now at 10,489 acres, with 0% containment. The Long Fire is now at 6,861 acres and 0% containment. Both Acorn (5 acres, 95% containment) and Packsaddle Fires (47 acres, 95% containment) remain unchanged.

Smoke

Background levels of smoke along the front range of the Sierra Nevada will likely increase starting this evening and be slow to mix out on Saturday morning. By Sunday morning, smoke will lessen in the foothill communities but increase in the Owens Valley and northward along Highway 395.



Daily AQI Forecast* for Friday

Station	Yesterday hourly	Thu 7/18	Comment for Today -- Fri, Jul 19	Forecast*	Fri 7/19	Sat 7/20
Sequoia			Increasing smoke starting late Friday night.			
Ridgecrest	No hourly data		Smoke pooling in evening hours and clears as the day heats up.			
Kernville	No hourly data		Conditions will be moderate, with hours of USG but smoke is expected to increase			
Lone Pine			Smoke pooling overnight into morning with some clearing in the afternoon.			
Porterville			Smoke is expected to greatly increase in foothill communities			
Springville			Smoke concentrations are expected to increase starting late evening			

Issued Jul 19, 2024 by Andrea Nick andrea.nick@usda.gov

Air Quality Index (AQI)	Actions to Protect Yourself
Good	None
Moderate	Unusually sensitive individuals should consider limiting prolonged or heavy exertion.
USG	People within Sensitive Groups* should reduce prolonged or heavy outdoor exertion.
Unhealthy	People within Sensitive Groups* should avoid all physical outdoor activity.
Very Unhealthy	Everyone should avoid prolonged or heavy exertion.
Hazardous	Everyone should avoid any outdoor activity.

***Disclaimer:** This forecast is based on fine particulates only; ozone is not included. Forecasts may be wrong; use at own risk. Use caution as conditions can change quickly. See your health professional as needed. Smoke sensitive groups should take appropriate precautions.

Additional Links

[Inciweb link for the incident](https://inciweb.wildfire.gov/incident-information/casqf-2024-sqf-lightning) -- <https://inciweb.wildfire.gov/incident-information/casqf-2024-sqf-lightning>

--



Issued by Interagency Wildland Fire Air Quality Response Program -- www.wildlandfiresmoke.net

Southern Sequoia Updates -- <https://outlooks.wildlandfiresmoke.net/outlook/1de35118>

*Smoke and Health Info -- www.airnow.gov/air-quality-and-health